



Safe Work at Height – Key Considerations

A Guide to Key Safety Considerations for the Client & Employer

The guidance given in this document is intended as general advice based on present understandings of the Regulations, the 2005 Act and HSA's publications. While legal advice has been sought and taken into account in preparing the guide, the advice given should not be regarded as a legal interpretation of the Regulations or of the Act (No. 10 of 2005). Advice given here must be considered in the context of professional judgement being exercised by competent persons; it is not intended to provide the definitive approach in any situation. In all circumstances those best placed to decide on the appropriate action will be the parties undertaking the particular risk assessment and resulting control measures. Appropriate legal and insurance advice should be sought as necessary.

What is ISHA?

The Irish Safety at Height Association (ISHA) was formed by a number of companies, Skyway Safe Access Equipment, Brandon Agencies, Bruce Shaw Safety Management and Garland Safety Management with the aim of promoting safe work at height practices in Ireland.

Duties and Liabilities

Anyone who controls a place of work is responsible for the safety and health of everyone in that area. This is a simple truth but not one that is always fully appreciated, **until something goes wrong**. Direct employees are an obvious example but they are not the only ones. Others include contractors and members of the public, even third parties.

Safety legislation in Ireland is regarded as particularly onerous not least because of the duties placed on employers but because it involves personal liability on individual directors and managers.

Managing work at height is difficult. It involves risk assessment, an evaluation of risks that cannot always be easily foreseen. Yet the responsibility remains. Key problems include delegation i.e. getting others to manage your policy and catering for 'unplanned events' e.g. roof access after a period of heavy rain.

Any incident arising from the management of works at height is likely to have serious consequences. It is recommended therefore that all of the issues be thoroughly and comprehensively identified, by the following steps below:

Issue

- Access for work at height
- Carrying out works
- Identifying the risks

Who

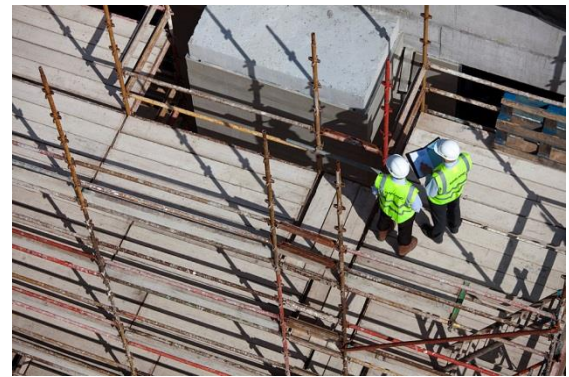
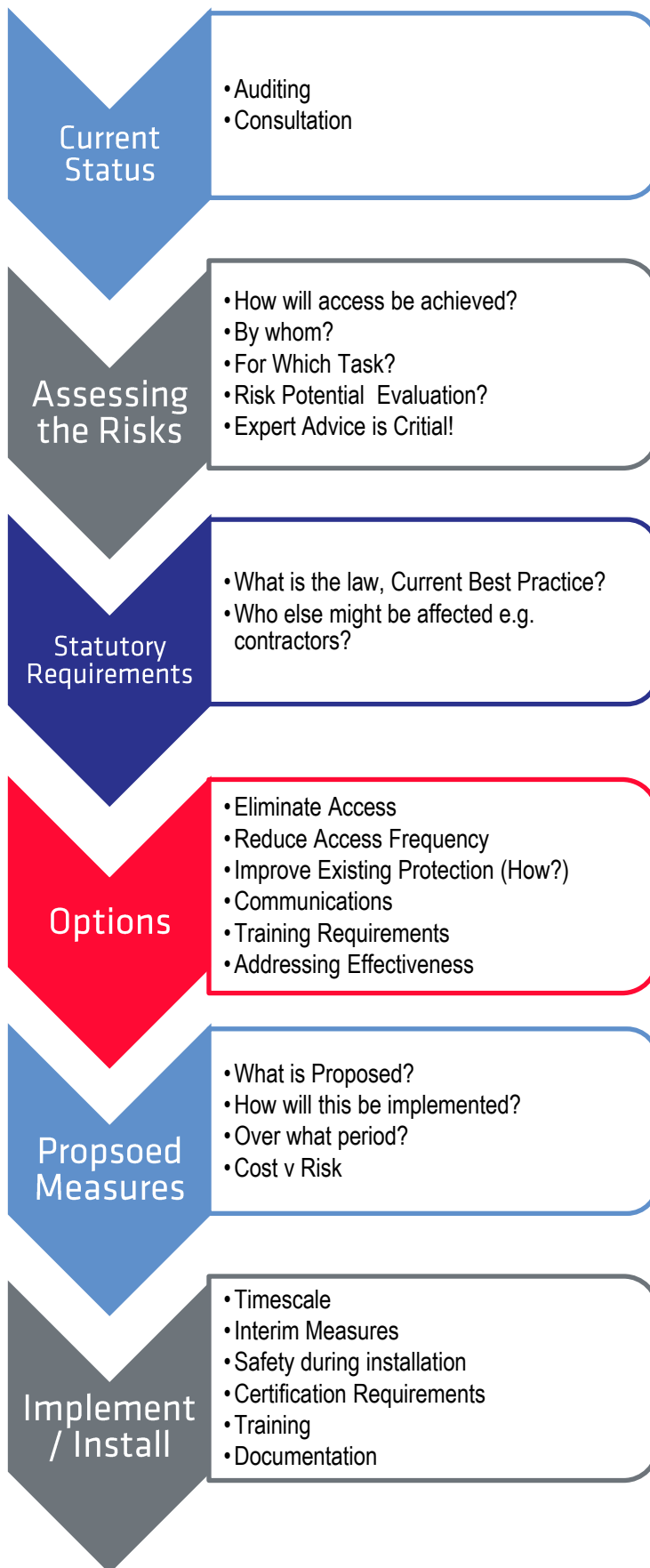
- Employees
- Contractors
- Maintenance workers

Safety and Health

- Ensure a safe place of work
- Providing safe access

Regulation and Requirements

- Safety Health and Welfare at Work
- Act 2005
- (Construction) Regulations 2013
- (General Application) Regulations 2007



Examples

- Preventing falls, for example, during access onto roof areas with low parapets
- Fragile materials, for example, roof lights, asbestos cement roof sheeting
- Slippery surfaces when walking across a wet roof
- Safely using ladders – both fixed and temporary
- Preventing unauthorised – even unintended access
- Bringing up materials & equipment to high spaces like roofs



Safe Work at Height Flowchart

